

Level I study guide

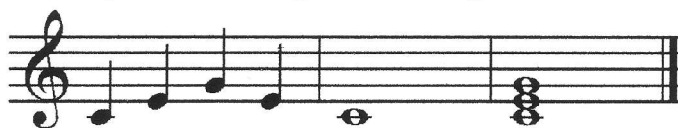
REQUIRED KEYS; MAJORS: F C G D A E

Keyboard

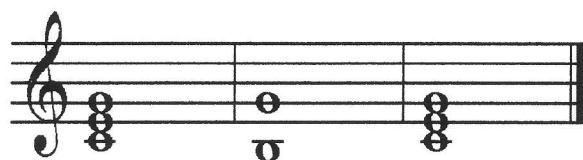
Play all 5-note scales HS or HT:

C & G RH 1 2 3 4 5 D & A RH 1 2 3 4 5 E RH 1 2 3 4 5 F RH 1 2 3 4 5
 LH 5 4 3 2 1 LH 5 4 3 2 1 LH 5 4 3 2 1 LH 5 4 3 2 1

Play tonic major triads in root position ascending and descending broken and blocked, HS or HT:



Play cadence:



I V I

Play arpeggios: Tonic major triads, two octaves, hand-over-hand, ascending and descending:



LH 5 3 1 RH 1 3 5 LH 2

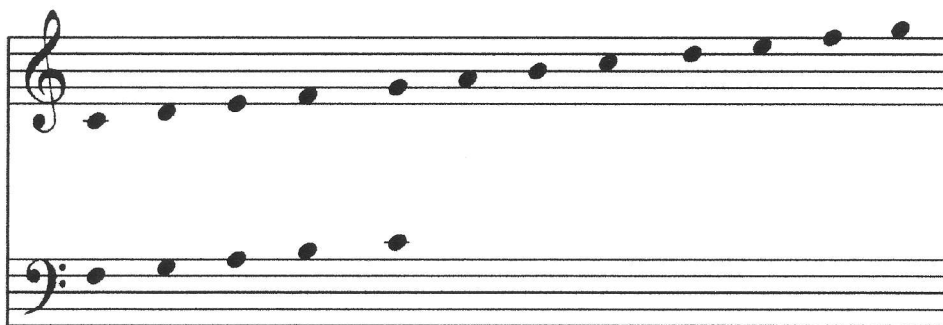
Ear Training:

Recognize highness and lowness of pitch using wide intervals

Recognize melodic direction (up, down, repeated)

Theory:

Identify notes on grand staff F to g²



Spell musical alphabet forwards and backwards by steps F ____ B ____ D ____
 and skips G ____ D ____ C ____ G

Spell five-note major scales: F ____; C ____; G ____; D ____

A ____; E ____

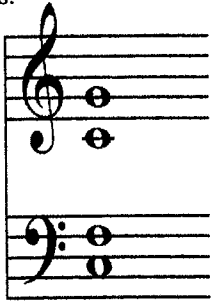
Level I page 2

Name tonic (I) and dominant (V) root tones

example:



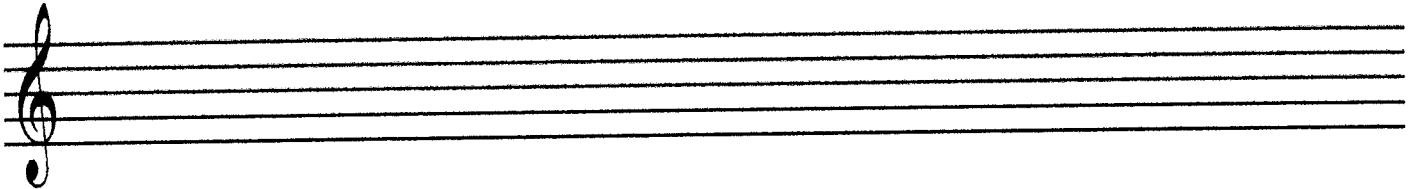
Identify guide notes:



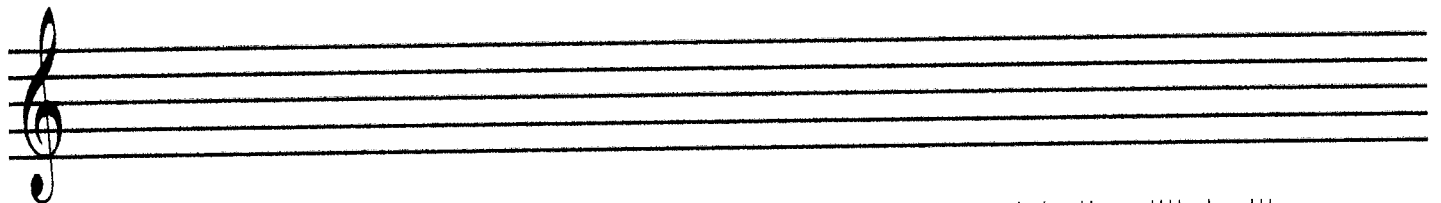
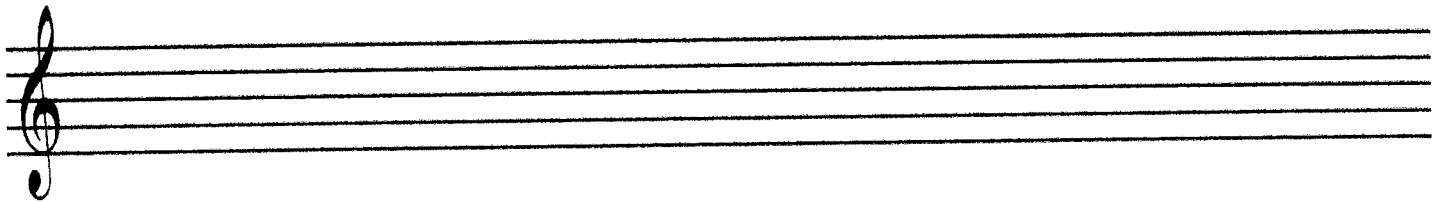
Identify on the staff intervals in either direction: 2nds, 3rds, 4ths and 5ths.



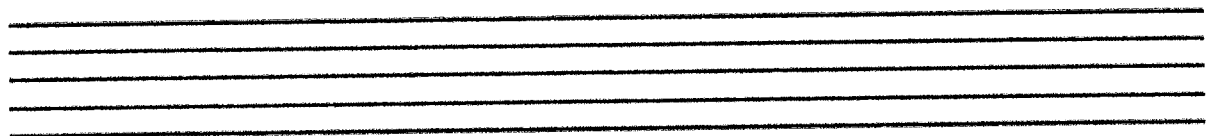
Notate line and space notes using quarter, half and whole notes.



Notate five note scales, correctly placing sharp or flat. Use extra staff paper for scales



Draw treble clef, bass clef, sharps, flats and naturals in correct staff placement. Know note values ♩ = ♪ ♪ = ♪♪ ♪♪ = ♪♪♪♪ ♪♪♪♪ = ♪♪♪♪♪♪♪♪



Terms:

Forte - loud; Piano - soft; Staccato - detached or disconnected; Legato - smooth or connected;
 Ritardando (ritard, rit.) - gradually slowing down