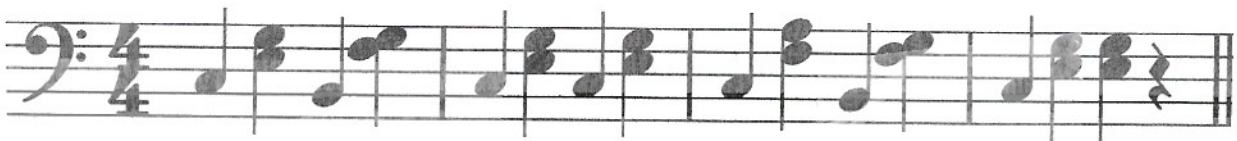


Left Hand Accompaniment Patterns

These are suggested left hand accompaniment patterns for the right hand melodies in each level. The easiest, most basic patterns are block chords and open fifths (chord shells), and those patterns are perfectly acceptable to use for all melodies. The patterns listed below are just templates (using the chords C, F, and G7). Adapt them as you wish. Also, each melody has suggested patterns. You can choose to use them or not, depending on the student's tastes and ability to play. Be creative and let your student have fun making music!

1. 4 beat folk dance pattern (bottom note, then top/middle notes together)



2. Waltz pattern (broken chords in triple time, using the broken chord pattern in #1)



3. Alberti bass (this is a specialized form of a broken chord)



